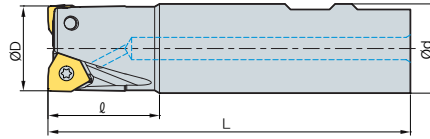


## RM6PS-WN04 new



AA  
90°

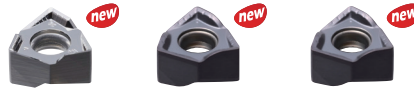
• AR: -6°  
• RR: -20°~ -14°

(mm)

Designation		ØD	Ød	ℓ	L	ap		
RM6PS	020R-2W20-110-WN04	2	20	20	35	110	4.3	0.22
	020R-3W20-110-WN04	3	20	20	35	110	4.3	0.22
	025R-3W25-110-WN04	3	25	25	35	110	4.3	0.36
	025R-4W25-110-WN04	4	25	25	35	110	4.3	0.35
	032R-5W32-110-WN04	5	32	32	35	110	4.3	0.60
	025R-6W32-110-WN04	6	32	32	35	110	4.3	0.60

### Available inserts

WNGX-MA      WNGX-ML      WNGX-MM



Designation	Cermet		Coated											Uncoated			page		
	CN2000	CN30	NCM325	NC5330	NCM535	NCM545	PC2505	PC2010	PC3600	PC3700	PC6510	PC9530	PC9540	PC5300	PC5400	ST30A		G10	H01
WNGX																			●
040304PNFR-MA																			●
040308PNFR-MA																			●
040312PNFR-MA																			●
040316PNFR-MA																			●
040304PNER-ML								●		●				●	●				
040308PNER-ML								●						●	●				
040312PNER-ML														●	●				
040316PNER-ML														●	●				
040304PNSR-MM								●		●				●	●				
040308PNSR-MM								●						●	●				
040312PNSR-MM														●	●				
040316PNSR-MM														●	●				

### Parts

Specification		
Ø20~Ø32	ETNA02506	TW07S

Available inserts E28

